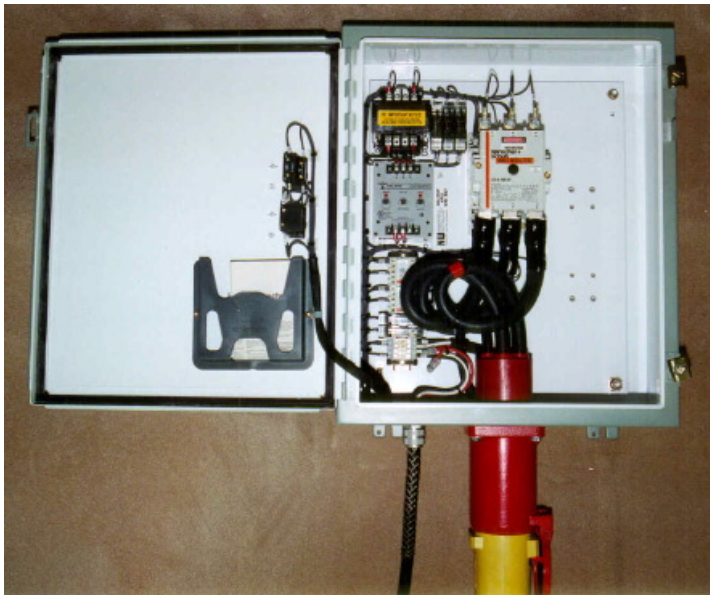


Let Northwest Rail Electric help you with all your passenger railcar systems needs. Starting with power generating, hotel services, power distributing and power management, our extensive experience in passenger car systems can solve the most difficult problems. Allow us to show you how you can accomplish more with less generating and distribution capacity, saving fuel and capital.

We also excel at heating, ventilation and air conditioning systems: HVAC control systems to keep your passengers comfortable from Alaska and Canada in the winter to Arizona and Florida in the summer. In addition to temperature comfort our systems can also maintain humidity to keep your dome windows clear and provide further comfort for your passengers.

Our automatic control systems for passenger cars allow automatic transfer, generator starting and control of critical systems when head-end power fails or otherwise shuts down.



Northwest Rail Electric Inc.  
2630 SE Steele Street  
Portland, Oregon 97202  
503/231-4808, Fax 503/230-0572

# YARD POWER SOLUTIONS



Standard or Custom Packages to provide railway passenger cars with power from station, shop, or other utility power while stopped for maintenance or layover, from

**Northwest Rail Electric**

## Standard Features:

- Standard models available in 200 Amp, 400 Amp, and 800 Amp versions
- Standard voltage is 480 volt 3 phase power
- Standard HEP connector safety loop
- Half-HEP, ¼ HEP, or Full Amtrak-style HEP units are available, for single tourist car storage up to full transit shop or station.
- Available with circuit breaker inside or without breaker for use with systems that come off of an existing sub-panel.



- Simple, easy to use control button system with indicator lights for system status.

## Custom Features

### Available as Extras:

A number of variations of yard power unit have been produced over the years. These are only a few examples of items we have provided to customers in custom-built units designed to meet specific needs.

- Extra control functions
- Stainless steel enclosures



- Portable units for shop or station
- Transformers for use with other than 480 volt supply and/or feeding other than 480 volt output.
- Auxiliary power outlets.
- Specialized connector systems

